

Ship Fact Sheet

AMAMAGNA



AMAMAGNA

The extraordinary AmaMagna is redefining the river cruise experience while sailing on the Danube River. Experience the ultimate in luxury, whether you're exercising in the expansive Zen Wellness Studio or enjoying the views from the full balcony in your stylish suite. With five bars, four unique restaurants – including the new AI Fresco restaurant and Jimmy's, a warm family-style venue – a heated sun-deck pool and whirlpool, the AmaMagna has quickly become the most luxurious cruise ship on the river.



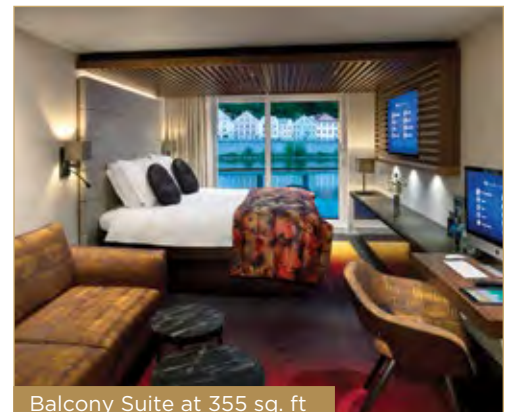
Multiple dining options

Included Benefits:

- ◆ Multiple Dining Venues, including the Main Restaurant, The Chef's Table, Jimmy's and the AI Fresco Restaurant
- ◆ Hand selected wine and beer with meals, plus Sip & Sail cocktail hour most evenings
- ◆ Split-level lounge creating intimate pockets in which to relax unhindered
- ◆ Heated sun deck pool with whirlpool and sky bar
- ◆ Multi-functional, expansive Zen Wellness Studio with space to accommodate group exercise classes led by a qualified Wellness Host
- ◆ Unlimited Wi-Fi—at no additional charge
- ◆ Salon services, including manicures, pedicures, hair and massage (*additional costs apply*)
- ◆ Low draft with quieter, more fuel-efficient engines
- ◆ No parallel docking with other ships in most ports along the Danube
- ◆ Exclusive Concierge Golf Programme offered on select sailings

Stateroom Accommodations:

- ◆ Most accommodations are suites, ranging from 355 sq. ft to 710 sq. ft, featuring step-out balconies
- ◆ Marble bathrooms, multi-jet showers, soothing bath products, cotton bathrobes, slippers and hair dryer
- ◆ Grand Suites (474 sq. ft) and an Owners Suite (710 sq. ft) with spacious seating areas, beds facing the river, bathtub, separate shower and double sinks
- ◆ Generous closet, storage and shelf space with in-room safe
- ◆ Entertainment-On-Demand with high-speed Internet, movies, music and English-language TV
- ◆ Individually controlled air-conditioning
- ◆ Connecting staterooms and triple/quad occupancy available (*select staterooms*)

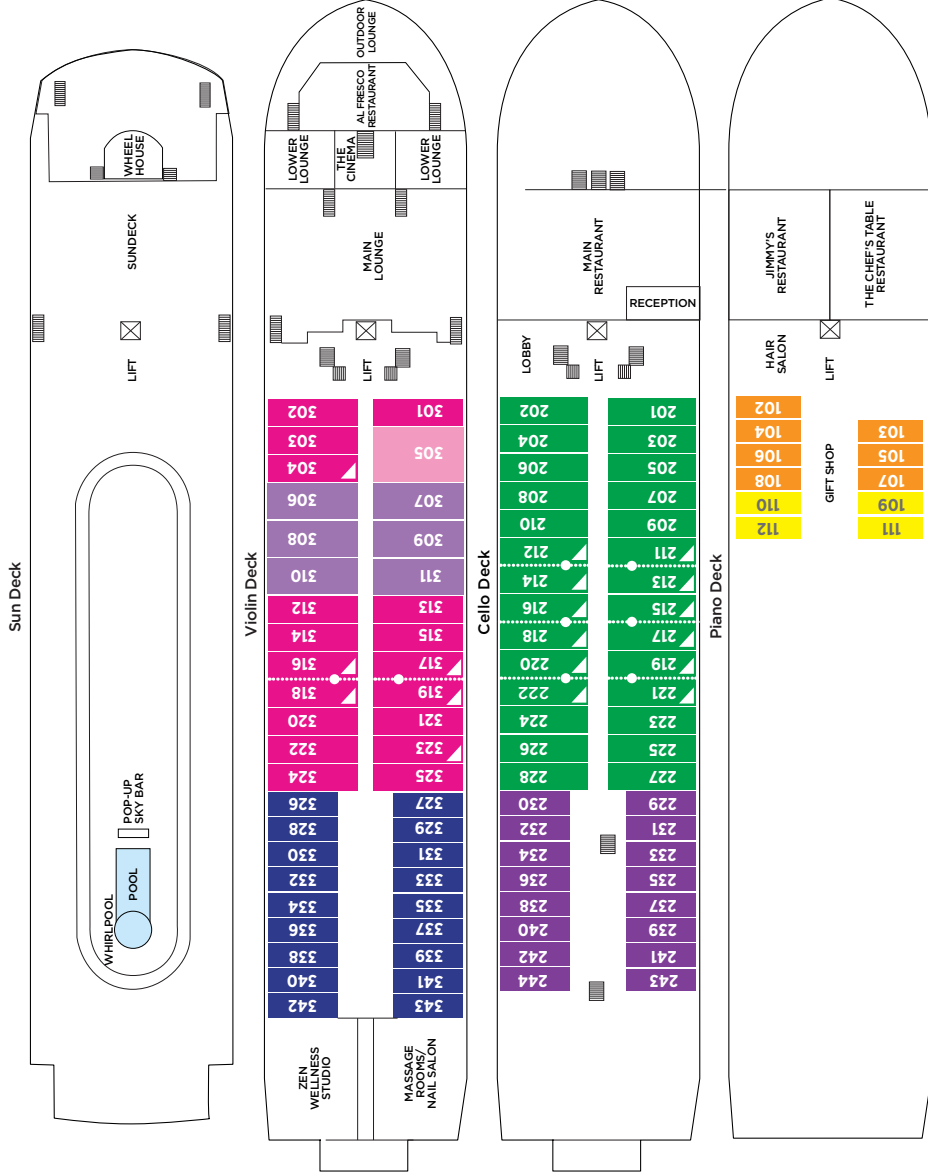


Balcony Suite at 355 sq. ft

AMAMAGNA

Technical Data:

- ◆ Year built: 2019 ◆ Staterooms: 98
- ◆ Length: 135 m./443 ft ◆ Passengers: 196
- ◆ Width: 22 m./ 72 ft ◆ Crew: 70
- ◆ Registry: Switzerland



Note: Elevator reaches Violin Deck, Cello Deck and Piano Deck; pop-up lift available for Sun Deck access

